

# VETROSPACE®



*AIR THAT  
LETS YOU  
THINK*

Pods and phone booths for  
healthier, more focused work



# CONTENTS

Introduction	3
The VETROSPACE Range	5
From XXL To XS	9
Built for Demanding Environments	15
Custom Pods for Any Use Case	19
How to Choose your Pod?	21
Responsible by Design	25
Maintenance Services	27
For Architects and Designers	29
Product Information	31
Colors and Materials	42
Smart Features and Technical Details	45
Furnishing your Pod	49
Tests and Standards	53

*VETROSPACE:*  
***ROOM TO  
BREATHE,  
AIR TO THINK***

*OFFICE PODS AND PHONE BOOTHS FOR  
HEALTHIER, MORE FOCUSED WORK*

At VETROSPACE, we're on a mission to banish brain fog from workplace pods. Poor air quality – especially excess CO<sub>2</sub> – quietly drains focus, creativity, and decision-making. That's why we create soundproof office pods with smart, patented CO<sub>2</sub>-controlled ventilation and advanced air filtration.

Our pods keep minds sharp and energy high, whether you're making a private call, working in deep concentration, or collaborating with a team. We're trusted by hospitals, banks, manufacturers, and offices worldwide to deliver spaces where people can think clearly, stay productive, and feel well all day long.

From compact phone booths to spacious meeting pods, every VETROSPACE product is proudly designed and crafted in Finland.

*WHAT SETS VETROSPACE APART:*

VETROSPACE stands out in the crowded pod market by focusing on what truly matters: air quality, acoustic comfort, purpose-built design, and lasting performance.

While many pods offer privacy, we go further – creating spaces that actively support wellbeing, productivity, and cognitive performance in a wide range of environments.



## *FIVE KEY REASONS WHY OUR APPROACH MAKES A DIFFERENCE:*

### **1. Fresh Air, Clear Mind**

VETROSPACE pods support wellbeing and performance with clean, fresh air. XXL to S models feature smart, patented CO<sub>2</sub>-controlled ventilation to keep energy levels high, and thinking sharp all day. XS phone booths deliver excellent air quality with continuous filtered airflow. The pods can be equipped with two-stage filtration to reach ISO 7-class air quality. Optional air conditioning ensures comfort even in demanding environments.

### **2. Silence That Speaks Volumes**

All VETROSPACE pods are Class A soundproofed, creating a quiet, distraction-free environment. Our acoustic solution combines sound-absorbing felt interiors with structural details such as dual-panel sliding glass doors to further reduce noise. Whether you're on a confidential call or deep in concentration, the silence inside speaks volumes about the quality of design.

### **3. Design Flexibility**

VETROSPACE pods are fully customizable in size (up to 100 m<sup>2</sup>), dimensions, layout, build material, finishes, and integrated technology. Layouts can support focused individual work, private offices, meeting rooms, or lounge-style break areas. You can bring your own furnishings or choose from our curated selection to match your workplace style and functionality.

### **4. Designed for Purpose**

Each pod is tailored to its environment. Offices and public spaces gain private, well-ventilated zones for focused work. Customer service pods benefit from dual-entrance setups, electric locks, and a clean, well-ventilated environment. In healthcare, HEPA filtered air and antimicrobial blue light (αBL) enable flexible use of spaces. For factories and industrial sites, we provide quiet, clean, and temperature-controlled spaces right on the factory floor.

### **5. Designed and Built in Finland**

All VETROSPACE products are proudly designed and manufactured in Finland. Our focus on durable engineering, sustainable near-shore production, and Nordic craftsmanship ensures a product that's built to last—both in function and form.



# *THE VETROSPACE RANGE*



*FROM FULL-SIZE MEETING ROOMS TO  
COMPACT PHONE BOOTHS – FIND THE  
RIGHT FIT FOR YOUR SPACE.*

No matter the size or function, every VETROSPACE pod delivers fresh air, privacy, and quiet focus. Explore our full range – from spacious XXL collaboration pods to compact XS phone booths.

*LARGE MEETING PODS FOR EIGHT TO TEN PEOPLE*



**VETROSPACE XXL**  
Perfect for 10  
12 m<sup>2</sup>



**VETROSPACE XL**  
Great for a team of 8  
9 m<sup>2</sup>

*MEETING AND WORKSPACE PODS FOR THREE TO SIX PEOPLE*



**VETROSPACE L+**  
Fits as many as 6  
6,2 m<sup>2</sup>



**VETROSPACE L**  
Fits as many as 6  
6 m<sup>2</sup>



**VETROSPACE M+**  
Ideal for 4  
4 m<sup>2</sup>



**VETROSPACE M**  
Ideal for 3  
3 m<sup>2</sup>

## WORKSPACES AND TWO-PERSON MEETING PODS



**VETROSPACE S+**  
Room for 2  
2,4 m<sup>2</sup>



**VETROSPACE S**  
Room for 2  
2 m<sup>2</sup>

## ONE-PERSON PHONE BOOTHS AND HYBRID PODS



**VETROSPACE XS+**  
Perfect for 1  
1,25 m<sup>2</sup>



**VETROSPACE XS**  
Perfect for 1  
1 m<sup>2</sup>

# AIR OR CLEAN

## BUILT FOR HOW YOU WORK

For pod sizes XXL to S, you can choose between two feature sets tailored to different environments. CLEAN pods are ideal for high-traffic spaces like clinics and service points, ensuring hygiene, safety, and peace of mind.

### AIR

- Smart, CO<sub>2</sub>-controlled ventilation with G4 filtration
- Class A soundproofing
- Space-saving dual-paned sliding door

### CLEAN

- Smart, CO<sub>2</sub>-controlled ventilation with G4 filtration
- Class A soundproofing
- Space-saving dual-paned sliding door
- Superior indoor air quality with HEPA H13 filtration
- Antimicrobial Blue Light (aBL)

THE VETROSPACE RANGE

# FROM XXL TO XS

Whatever your space challenge – from hosting large meetings to creating private focus zones – VETROSPACE has a pod to match. All models feature Class A soundproofing, air filtering, and adaptable interiors so you can work, meet, and collaborate in comfort anywhere.



*LARGE MEETING PODS*  
***VETROSPACE***  
***XXL & XL***

**For the biggest ideas and the largest teams.**

Designed for groups of over six people, XXL and XL are our most spacious pods, comfortably seating up to 8–10 people. Ideal for client meetings, team workshops, or creative sessions where you need space to spread out. Exceptional soundproofing keeps conversations private, while smart CO<sub>2</sub>-controlled ventilation maintains fresh air and productive energy throughout long meetings.

Your team stays alert and engaged – without the stifled yawns that come with stale air. The modular design allows for tailored layouts and furnishings, making these pods equally suited for a large private office, collaborative project space, or break area.



*TEAM WORKSPACES & INTERNAL MEETING SPACES*

# *VETROSPACE*

## *L+, L, M+, M*



### **The flexible core of any productive workplace.**

Perfect for up to six people, these mid-sized pods offer a quiet, enclosed environment for daily meetings, quick catch-ups, and team sessions. Superior acoustic performance blocks outside distractions, while the space-efficient sliding door makes them easy to place even in compact office layouts.

Flexible interiors can be furnished with a meeting table, lounge seating, or desks, allowing the pod to double as a shared workspace or breakout area. L+ is often used as a customer service pod with dual entrances.

*INDIVIDUAL WORKSPACES & SMALL TEAM PODS*

# *VETROSPACE*

## *S+ & S*



### **Compact comfort for focused work or two-person meetings.**

Designed for one or two users, these pods offer a calm environment for private conversations, video calls, or focused individual work. The S+ and S models are compact yet comfortable, with smart CO<sub>2</sub>-controlled ventilation, Class A soundproofing, and a sliding door to save space.

They can be set up as a personal office, a two-person meeting room, or a versatile space for hybrid work. Adjustable layouts and furnishing options ensure the pod adapts perfectly to your workflow.

*PHONE BOOTHS & HYBRID WORK PODS*

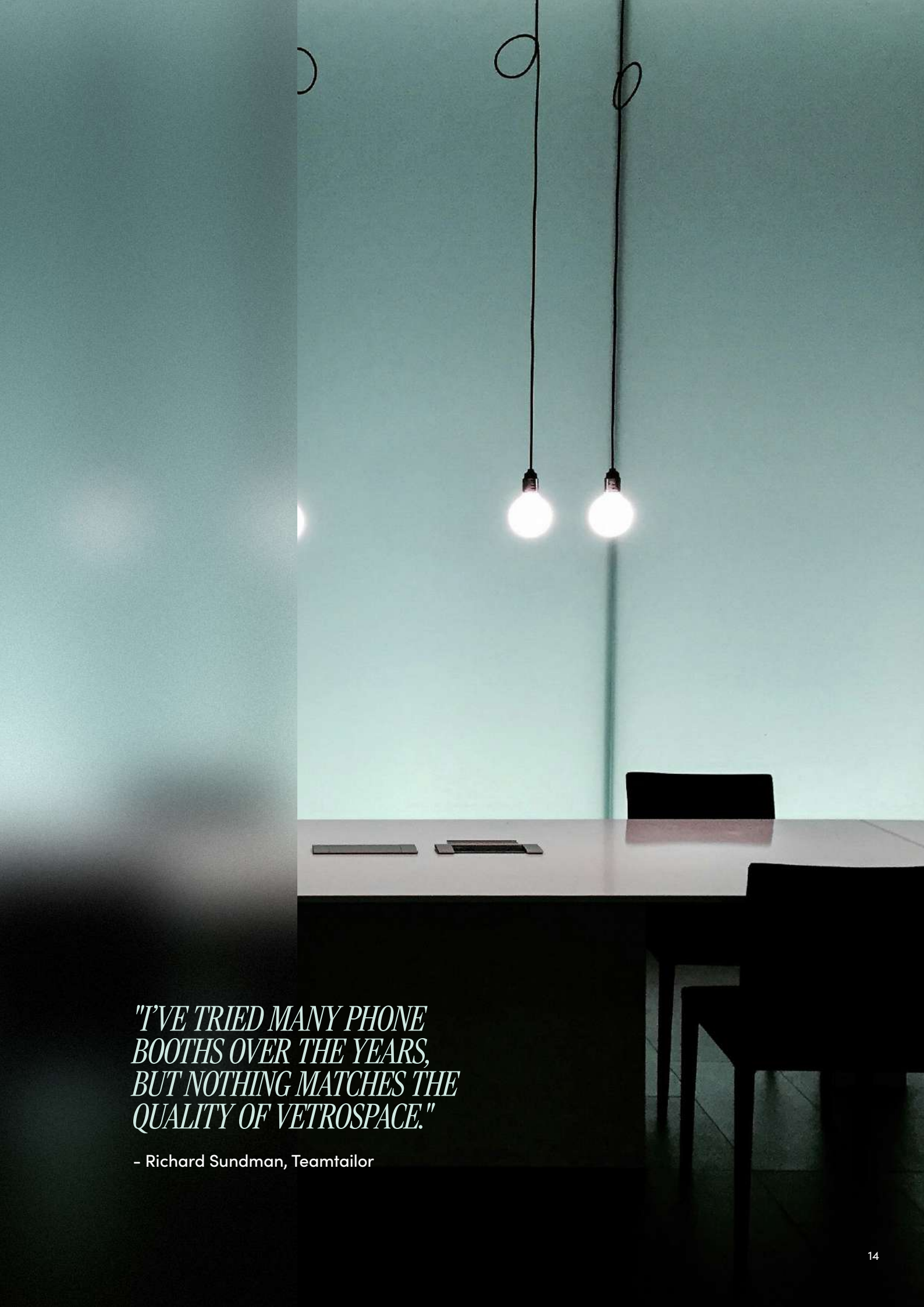
# *VETROSPACE XS+ & XS*



## **Your personal focus zone, anywhere in the office.**

Compact, mobile, and built for focus, XS+ and XS provide a private retreat for one person in busy workplaces. These pods combine fresh air, Class A soundproofing, and visual privacy, making them perfect for calls, quick video meetings, or extended focus sessions.

The XS+ offers room for an ergonomic chair and optional height-adjustable table for all-day work, while the smaller XS is ideal for shorter tasks. Both feature hinged glass doors and discreet wheels for easy relocation.



*"I'VE TRIED MANY PHONE  
BOOTHS OVER THE YEARS,  
BUT NOTHING MATCHES THE  
QUALITY OF VETROSPACE."*

- Richard Sundman, Teamtailor

# *BUILT FOR DEMANDING ENVIRONMENTS*



VETROSPACE pods aren't just for offices—they're trusted in healthcare, industrial, and public service settings where hygiene, privacy, and flexibility are critical. Here's how our smart, soundproof spaces solve real-world challenges in specialized environments.



# PODS FOR CUSTOMER SERVICE

**Soundproof spaces with two entrances for safe and efficient interactions.**

VETROSPACE pods provide a hygienic, soundproof environment with a dual-entrance configuration. An integrated disinfection system removes harmful microbes from surfaces and air—without chemicals or manual cleaning.

**Key benefits for Customer Service:**

- Dual-entrance setup allows staff and customers to use separate entrances (e.g., from back office and lobby)
- Electromagnetic lock securely and conveniently controls customer access
- Chemical-free visible light disinfection and HEPA H13 filtration keep the space clean between visits
- Class A soundproofing (ISO 23351-1) ensures private conversations
- Compact footprint, easy installation, and flexible placement in public-facing spaces



**Ideal for:**

Banks, police stations, pharmacies, insurance offices, and automotive dealerships

**Trusted by:** Leading investment bank in the US, OP and S-Pankki in Finland



# PODS FOR HEALTHCARE

**Flexible, hygienic, and comfortable spaces designed for patient and staff wellbeing.**

Hospitals and clinics face constant pressure from space shortages, renovation cycles, and evolving patient needs. VETROSPACE pods offer clean, private environments that can be deployed quickly and integrated into existing infrastructure—without compromising safety or comfort. Designed for 24/7 use, they support patient care, staff focus, and hygienic conditions.

**Key benefits for Healthcare:**

- ISO 7 cleanroom-level air quality with HEPA H13 filtration and antimicrobial Blue Light (aBL) for chemical-free disinfection
- 24/7 usability with powerful, CO<sub>2</sub>-monitored ventilation
- Class A soundproofing (ISO 23351-1) ensures patient privacy and staff concentration
- Wide sliding doors (up to 160 cm) for easy hospital bed and equipment access
- Connects to hospital infrastructure—ready for medical gases, data, and secured power supply
- Fast installation with no noise, dust, or building permits required



**Ideal for:**

Consultation rooms, medical offices, patient monitoring areas, reception desks, hospital wards, break rooms, and administrative spaces.

**Trusted by:**

Docrates Cancer Center, HUS University Hospital and Hospital Nova in Finland, Robert Bosch Hospital in Germany



© Schaeffler

# *PODS FOR INDUSTRIAL ENVIRONMENTS*

## **Clarity, comfort, and clean air on the factory floor.**

Factories and production facilities often face challenges with noise, harmful particles, and uncomfortable temperatures. VETROSPACE pods bring calm, clean, energy-efficient workspaces directly into industrial settings. They are easy to relocate and ready to use – improving wellbeing and reducing physical distance between teams and tasks.

### **Key benefits for Industrial Environments**

- Enclosed spaces with G4 and HEPA H13 filtration plus CO<sub>2</sub>-monitored ventilation for excellent air quality
- Dust- and noise-free environments that can be relocated, reconfigured, and installed without permits
- Plug-and-play setup – no need for new HVAC, plumbing, or electrical systems
- Quiet, shared spaces that bring blue- and white-collar teams together on the factory floor



© Schaeffler

### **Ideal for:**

Engineering, planning, supervisor tasks, on-site training, team meetings, and quiet staff break rooms.

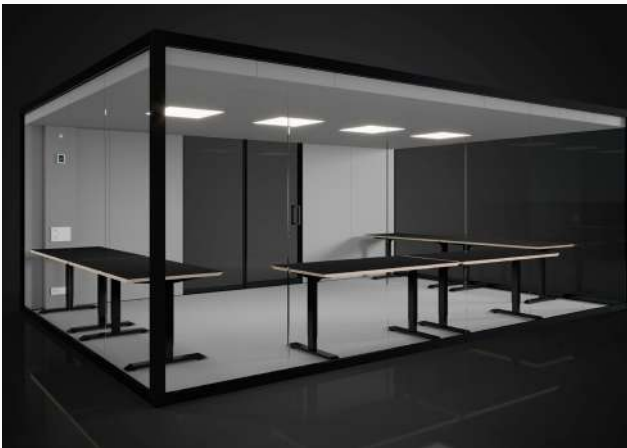
### **Trusted by:**

German automotive and industrial suppliers, as well as factories and logistics centers in Finland.

# CUSTOM PODS FOR ANY USE CASE

## *TAILORED SPACES THAT ADAPT TO YOUR NEEDS – NOT THE OTHER WAY AROUND*

With VETROSPACE, customization goes far beyond colors or finishes. Our pods are designed and built to meet specific requirements – whether in offices, healthcare, or demanding industrial environments.



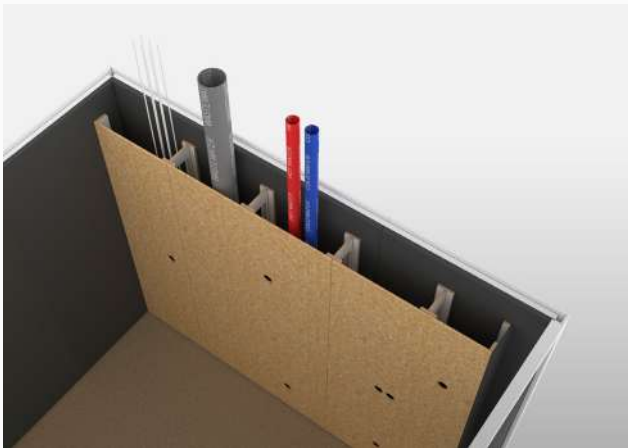
### **Flexible configurations**

Custom sizes and layouts maximize space efficiency. We've delivered pods that are taller, wider, or larger than standard-sized pods, each one adapted to unique requirements.



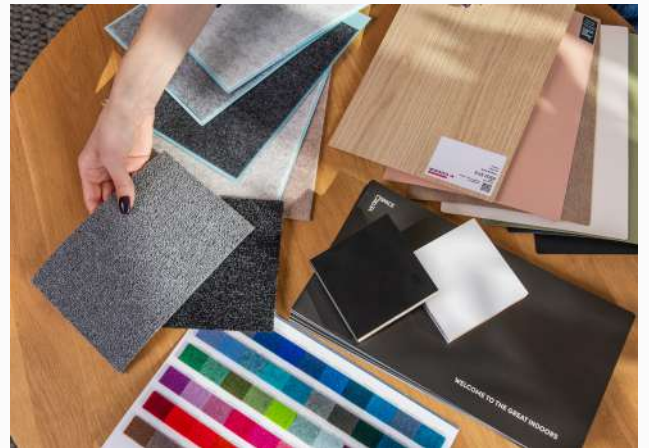
### **Personalized technology**

Integrate lighting, displays, control systems, or specialized tech. We've built pods for multi-screen setups and tailored digital tools to match specialized workflows.



### Specific adaptations

From plumbing and water inlets for kitchenettes to glass-free private rooms for sensitive applications, our design team can accommodate any functional need.



### Tailored aesthetics

Choose from a wide range of colors, materials, and branding options to ensure your pod blends seamlessly with your space.

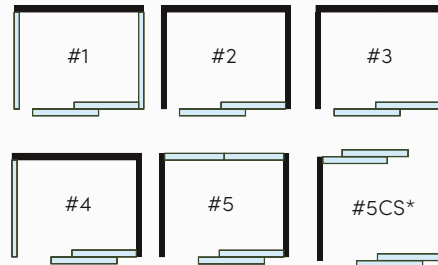
*WITH VETROSPACE, YOUR IMAGINATION IS THE ONLY LIMIT.*

# HOW TO CHOOSE YOUR VETROSPACE POD?



## FROM IDEA TO ORDER – YOUR PERFECT POD IN SIX SIMPLE STEPS

Whether you need a full-size meeting pod or a compact phone booth, we'll help you find the right solution. Larger pods (XXL to S) offer a wide range of configurations, technologies, and options for different use cases. The XS+ and XS models offer a streamlined selection process with fewer decisions required.



POPULAR!

## FOR VETROSPACE PODS SIZE XXL TO S

### 1. Choose your pod model

Select the right size based on space, intended use, and the number of users. Larger pods offer more layout options and long-term flexibility as your needs evolve.

### 2. Choose your wall and door configuration

All configurations include a sliding, dual-panel glass door. Select a left- or right-handed layout and up to two additional glass walls to suit your space and privacy needs.

### Available configurations:

- #1 Sliding glass door with glass walls on both sides
- #2 Sliding glass door with three solid walls
- #3 Sliding glass door with glass wall on the right
- #4 Sliding glass door with glass wall on the left
- #5 Sliding glass door with opposite glass wall
- #5CS Sliding glass doors on both sides (special version for customer service)

POPULAR!



### 3. Choose your feature set: AIR or CLEAN

- **AIR:** Automatic CO<sub>2</sub>-controlled ventilation, G4 filtration, and a high-performance radial fan
- **CLEAN:** Everything in AIR, plus ISO 7 cleanroom-level filtration with HEPA H13 filtering and Spectral Blue MWHI® antimicrobial blue light

### 4. Select additional features

Options to enhance comfort, accessibility, privacy, or connectivity:

- Built-in air conditioning (heating/cooling)
- Electromagnetic code lock
- Additional sliding door for customer service
- Wheelchair ramp (threshold height 15 mm)
- Electrically controlled privacy glass
- Privacy stickers
- AV kits (USB & HDMI)
- USB charging and RJ45 data ports
- Seismic-certified structure
- Additional acoustic panels

Industry-specific add-ons are also available, such as HPL interiors and ESD vinyl flooring for healthcare applications.

### 5. Choose your colors and materials

Define the look and feel of your pod with our wide selection of exterior and interior colors, and finishes.

### 6. Furnish your pod

Complete your design with a curated selection of tables, chairs, and sofas – or use your preferred furniture



## FOR VETROSPACE XS+ AND XS PHONE BOOTHS

### 1. Choose your model

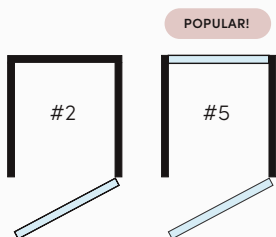
Select XS+ or XS based on available space and intended use. XS+ is ideal for hybrid work and longer sessions, while XS is perfect for phone calls and quick video meetings.

### 2. Choose your wall and door configuration

Both models feature a hinged glass door and one of the following layouts:

#2 Three solid walls

#5 Glass wall opposite the door **POPULAR!**



### 3. Choose your table and seating

Opt for the included fixed table or add the optional electric height-adjustable table for improved ergonomics. The electric table is particularly suited to XS+, allowing you to alternate between seated and standing positions. Select an office chair for XS+ or a bar stool for XS from our collection – or use your own seating.

### 4. Add optional features

Enhance privacy, connectivity, or performance with:

- Privacy stickers
- Additional acoustic panels
- RJ45 data ports
- Seismic-certified structure

### 5. Pick your finishes

Choose from our curated palette of colors and surface materials to match your interior style.





*RESPONSIBLE BY  
DESIGN - FROM  
MATERIALS TO  
LIFECYCLE*



DESIGN<sup>®</sup>  
FROM  
FINLAND

## *RESPONSIBLE DESIGN, LOCAL CRAFTSMANSHIP*

At VETROSPACE, sustainability is part of every design decision. Proudly designed and manufactured in Finland, our pods combine Nordic quality, durability, and environmental responsibility. By sourcing materials locally whenever possible, we reduce transport emissions, support regional suppliers, and ensure consistent quality.

## *PRODUCT LIFECYCLE AND MATERIALS*

Every pod is built to order (BTO), ensuring efficient production without overproduction or waste. The modular structure allows parts to be repaired, refurbished, or upgraded – extending product life and reducing the need for replacements. At the end of its lifecycle, a VETROSPACE pod can be dismantled and recycled, with glass, aluminum, and wood materials going back into the resource loop.

- **Glass and aluminum:** 100% recyclable; aluminum profiles made entirely from recycled aluminum, glass Cradle to Cradle Certified<sup>®</sup>.
- **Wood:** FSC- and PEFC-certified, sourced from sustainably managed Finnish forests, meeting M1, LVL M1, and CARB P2/ULEF emission standards.
- **Acoustic Felt:** 100% PET felt. Or 90% wool and 10% recycled polyester, GREENGUARD Gold Certified.
- **Packaging:** 100% recyclable, with wood packaging materials PEFC- and FSC-certified.

### **Energy efficiency in production and use**

In our own production, we minimize waste, use only energy-efficient LED lighting, and run demand-controlled ventilation to reduce energy use. The same principle is built into our pods: smart CO<sub>2</sub>-monitored ventilation delivers only the airflow needed, and motion-sensor LED lighting activates only when the pod is in use.

### **Certifications**

Our products meet international environmental and safety standards, including:

- GREENGUARD emissions certification
- FSC and PEFC sustainable forestry certifications
- Cradle to Cradle Certified<sup>®</sup> glass
- ROHS I, II, and III compliant aluminum

### **Continuous improvement**

We are committed to reducing emissions, using resources efficiently, and designing products that support both user wellbeing and environmental responsibility.

*FROM DELIVERY TO DAILY USE*

# *WE'VE GOT YOU COVERED*

## *ENSURING PERFORMANCE AND APPEARANCE FOR YEARS TO COME*

VETROSPACE pods are built to deliver fresh, clean air through high-quality filtration and industrial-grade ventilation. Regular cleaning is essential to maintain both performance and appearance, helping protect surfaces and extend the life of your pod. All technical maintenance beyond basic cleaning should be carried out by VETROSPACE-certified service personnel.

Services are available directly from us or through our authorized dealers. Check your local representative for regional availability.

We support you throughout your pod's entire lifecycle – from selection and design to delivery, installation, and long-term care.

### **Selection, planning and design**

We help you choose the right pod, plan its optimal location, and design the interior to fit your needs.

### **Delivery and installation**

Our pods are delivered worldwide in secure packaging and can be assembled without dust or noise with no construction permits required.

### **Cleaning**

Filters should be replaced regularly, and routine cleaning with neutral agents helps preserve finishes and ensure long-term performance.

**Special note:** CLEAN models feature Spectral Blue MWHI® antimicrobial blue light, which automatically disinfects interior surfaces when the pod is unoccupied. This reduces the need for frequent cleaning by neutralizing bacteria, viruses, and other contaminants.

### **Maintenance service plans**

Regular maintenance extends the life of your pod and keeps it operating at peak performance. The standard warranty period is two years from delivery, with extended coverage of up to five years available through our service plans (check regional availability).



*WE OFFER TWO SERVICE LEVELS:*

**Light package – Filter Service, 24 Months**

Pre-filters sent every 6 months and HEPA H13 filters every two years, plus a maintenance checklist and spare parts list.

**Extended package – Full Service, 24 Months**

VETROSPACE executes all maintenance, including filter replacements, inspections, and adjustment. Contact your local representative for availability.

*WITH THE RIGHT CARE, YOUR VETROSPACE POD WILL PROVIDE FRESH AIR, QUIET FOCUS, AND LASTING VALUE FOR OVER 20 YEARS.*

# *INCORPORATING VETR INTO YOUR PROJECTS*



# VETROSPACE



## *FOR ARCHITECTS AND INTERIOR DESIGNERS*

**Design freedom. Verified performance.  
Future-ready spaces.**

VETROSPACE pods empower you to create flexible, quiet, and health-supporting environments across offices, healthcare facilities, industrial sites, and customer service spaces – without compromising your architectural vision.

### **Design resources at your fingertips**



Download product visuals and  
3D model directly at:  
[pages.vetrospace.com/architects](https://pages.vetrospace.com/architects)

CAD-data is available in .DWG, .3DM, .3DS formats.

### **Why do architects choose VETROSPACE?**

- Design flexibility – Fully customizable in size, shape, layout, colors and furnishing, and integrated technology.
- Minimalist aesthetic – Enhances the space without stealing the show.
- Proven performance – Superior soundproofing, exceptional air quality, and ergonomic comfort support user wellbeing and productivity.
- Smooth installation – Fast and clean, even in operational or demanding environments.

# *VETROSPACE PRODUCTS*

# XXL

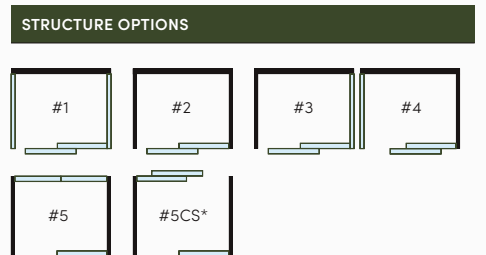


VETROSPACE XXL, W420 D310 H240 cm, Capacity 10 persons

TECHNICAL SPECIFICATION		
External dimensions (WxDxH)*	410 x 310 x 240 cm	
Internal dimensions (WxDxH)*	400 x 300 x 220 cm	
Indoor area	12 m <sup>2</sup>	
Weight	1950 kg	
Required free height for installation	250cm	
Soundproofing	Class A (ISO 23351-1)	41-46dB Rw (ISO 717)
Glass	16 mm Sound Control laminated safety glass	
Door	Dual panel sliding door, wheelchair access	
Door handing	Left or right hand	
Ventilation	Automatic +180 l/s	
Ventilation control	Smart CO <sub>2</sub> controller	
Ventilation fan	Radial fan, heavy duty	
Air filtration	<b>AIR SPEC:</b> G4	<b>CLEAN SPEC:</b> G4 + HEPA H 13 (ISO-7 level IAQ)
Lighting	Dimmable LED 4000K, motion detector	Antimicrobial Spectral Blue + Dimmable LED 4000K, motion detector
Usage	Continuous, 24/7	
Connectivity	4 pcs power socket, USB A+C (charging), 2 pcs RJ45	
Power supply	110-240 VAC / 10-16A / 50-60Hz	
Power and network cable	5 meters	
Power	150W (avg) 800W (peak)	
Fire safety	UL 723: Class A-C (surface) ASTM E648: Class 1 (flooring) BfL-S1 (flooring)	
Electrical safety	EN-IEC 60335-1:2024 UL 962 (E514776)	

OPTIONS
AV kit in technology panel (includes HDMI/USB A DATA/ POWER/VESA BRACKET)
AV kit in separate AV panel (includes HDMI/USB A DATA/ POWER/VESA BRACKET)
Air conditioning
Additional sliding door
Electromagnetic lock (can be connected to 3rd party systems)
Door ramp pair (threshold without ramp is only 15mm)
Additional acoustic panels with velcro fixing
Sprinkler opening
Privacy glass (electric dimming with remote controller)

PACKAGING	
Crate 1	249x77x134 cm 1000 kg
Crate 2	249x77x124 cm 800 kg
Crate 3	323x77x94 cm 350 kg
Crate 4	323x77x94 cm 350 kg
Crate 5	323x77x94 cm 350 kg
Crate 6	423x23x23 cm 30 kg

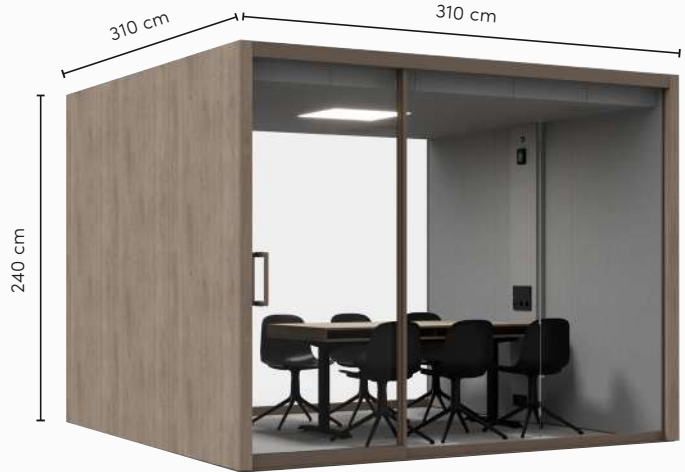


In the standard pod, the door can be placed on any element on the front wall and can be left or right handed. Ask our sales team if you interested in a pod with a door on side wall.

(\*) #5CS is a dual door customer service pod that comes with added cost.

(\*) May vary a few centimeters, depending on the selected stucture and door location. Ask our sales team for customized sizes, heights, and door solutions

XL



VETROSPACE XL, W310 D310 H240 cm, Capacity 8 persons

TECHNICAL SPECIFICATION

External dimensions (WxDxH)*	310 x 310 x 240 cm	
Internal dimensions (WxDxH)*	300 x 300 x 220 cm	
Indoor area	9 m <sup>2</sup>	
Weight	1600 kg	
Required free height for installation	250 cm	
Soundproofing	Class A (ISO 23351-1)	41-46dB Rw (ISO 717)
Glass	16 mm Sound Control laminated safety glass	
Door	Dual panel sliding door, wheelchair access	
Door handing	Left or right hand	
Ventilation	Automatic +120 l/s	
Ventilation control	Smart CO <sub>2</sub> controller	
Ventilation fan	Radial fan, heavy duty	
Air filtration	<b>AIR SPEC:</b> G4	<b>CLEAN SPEC:</b> G4 + HEPA H 13 (ISO-7 level IAQ)
Lighting	Dimmable LED 4000K, motion detector	Antimicrobial Spectral Blue + Dimmable LED 4000K, motion detector
Usage	Continuous, 24/7	
Connectivity	4 pcs power socket, USB A+C (charging), 2 pcs RJ45	
Power supply	110-240 VAC / 10-16A / 50-60Hz	
Power and network cable	5 meters	
Power	100W (avg) 550W (peak)	
Fire safety	UL 723: Class A-C (surface) ASTM E648: Class 1 (flooring) Bfl-S1 (flooring)	
Electrical safety	EN-IEC 60335-1:2024 UL 962 (E514776)	
Seismic safety	Special SEISMIC Certification(2019-0176-COC-01-00) International Building Code (IBC) 2024 California Building Code (CBC) 2025 *	

OPTIONS

AV kit in technology panel (includes HDMI/USB A DATA/ POWER/VESA BRACKET)
AV kit in separate AV panel (includes HDMI/USB A DATA/ POWER/VESA BRACKET)
Air conditioning
Additional sliding door
Electromagnetic lock (can be connected to 3rd party systems)
Door ramp pair (threshold without ramp is only 15mm)
Additional acoustic panels with velcro fixing
Sprinkler opening
Privacy glass (electric dimming with remote controller)

PACKAGING

Crate 1	249x77x134 cm 550 kg
Crate 2	249x77x124 cm 550 kg
Crate 3	323x77x94 cm 425 kg
Crate 4	323x77x94 cm 425 kg

STRUCTURE OPTIONS



In the standard pod, the door can be placed on any element on the front wall and can be left or right handed. Ask our sales team if you interested in a pod with a door on side wall.

(\*) #5CS is a dual door customer service pod that comes with added cost.

(\* ) May vary a few centimeters, depending on the selected structure and door location. Ask our sales team for customized sizes, heights, and door solutions

# L+

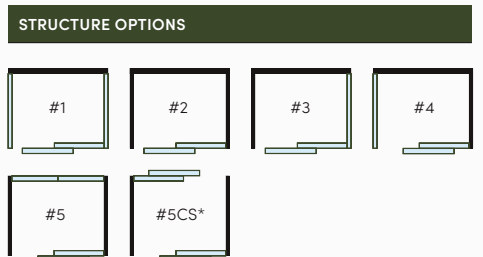


VETROSPACE L+, W260 D260 H240 cm, Capacity 6 persons

TECHNICAL SPECIFICATION		
External dimensions (WxDxH)*	260 x 260 x 240 cm	
Internal dimensions (WxDxH)*	250 x 250 x 220 cm	
Indoor area	6,25 m <sup>2</sup>	
Weight	1350 kg	
Required free height for installation	250 cm	
Soundproofing	Class A (ISO 23351-1)	41-46dB Rw (ISO 717)
Glass	16 mm Sound Control laminated safety glass	
Door	Dual panel sliding door, wheelchair access	
Door handing	Left or right hand	
Ventilation	Automatic +120 l/s	
Ventilation control	Smart CO <sub>2</sub> controller	
Ventilation fan	Radial fan, heavy duty	
Air filtration	<b>AIR SPEC:</b> G4	<b>CLEAN SPEC:</b> G4 + HEPA H 13 (ISO-7 level IAQ)
Lighting	Dimmable LED 4000K, motion detector	Antimicrobial Spectral Blue + Dimmable LED 4000K, motion detector
Usage	Continuous, 24/7	
Connectivity	4 pcs power socket, USB A+C (charging), 2 pcs RJ45	
Power supply	110-240 VAC / 10-16A / 50-60Hz	
Power and network cable	5 meters	
Power	100W (avg) 550W (peak)	
Fire safety	UL 723: Class A-C (surface) ASTM E648: Class 1 (flooring) BfL-S1 (flooring)	
Electrical safety	EN-IEC 60335-1:2024 UL 962 (E514776)	
Seismic safety	Special SEISMIC Certification(2019-0176-COC-01-00) International Building Code (IBC) 2024 California Building Code (CBC) 2025	

OPTIONS
AV kit in technology panel (includes HDMI/USB A DATA/ POWER/VESA BRACKET)
AV kit in separate AV panel (includes HDMI/USB A DATA/ POWER/VESA BRACKET)
Air conditioning
Additional sliding door
Electromagnetic lock (can be connected to 3rd party systems)
Door ramp pair (threshold without ramp is only 15mm)
Additional acoustic panels with velcro fixing
Sprinkler opening
Privacy glass (electric dimming with remote controller)

PACKAGING	
Crate 1	249x77x134 cm 550 kg
Crate 2	249x77x124 cm 550 kg
Crate 3	273x77x94 cm 400 kg
Crate 4	273x77x94 cm 400 kg



In the standard pod, the door can be placed on any element on the front wall and can be left or right handed. Ask our sales team if you interested in a pod with a door on side wall.

(\*) #5CS is a dual door customer service pod that comes with added cost.

(\* ) May vary a few centimeters, depending on the selected stucture and door location. Ask our sales team for customized sizes, heights, and door solutions

# L



VETROSPACE L, W310 D210 H240 cm, Capacity 6 persons

### TECHNICAL SPECIFICATION

External dimensions (WxDxH)*	310 x 210 x 240 cm	
Internal dimensions (WxDxH)*	300 x 200 x 220 cm	
Indoor area	6 m <sup>2</sup>	
Weight	1300 kg	
Required free height for installation	250 cm	
Soundproofing	Class A (ISO 23351-1)	41-46dB Rw (ISO 717)
Glass	16 mm Sound Control laminated safety glass	
Door	Dual panel sliding door, wheelchair access	
Door handing	Left or right hand	
Ventilation	Automatic +120 l/s	
Ventilation control	Smart CO <sub>2</sub> controller	
Ventilation fan	Radial fan, heavy duty	
Air filtration	<b>AIR SPEC:</b> G4	<b>CLEAN SPEC:</b> G4 + HEPA H 13 (ISO-7 level IAQ)
Lighting	Dimmable LED 4000K, motion detector	Antimicrobial Spectral Blue + Dimmable LED 4000K, motion detector
Usage	Continuous, 24/7	
Connectivity	4 pcs power socket, USB A+C (charging), 2 pcs RJ45	
Power supply	110-240 VAC / 10-16A / 50-60Hz	
Power and network cable	5 meters	
Power	100W (avg) 550W (peak)	
Fire safety	UL 723: Class A-C (surface) ASTM E648: Class 1 (flooring) BfL-S1 (flooring)	
Electrical safety	EN-IEC 60335-1:2024 UL 962 (E514776)	
Seismic safety	Special SEISMIC Certification(2019-0176-COC-01-00) International Building Code (IBC) 2024 California Building Code (CBC) 2025	

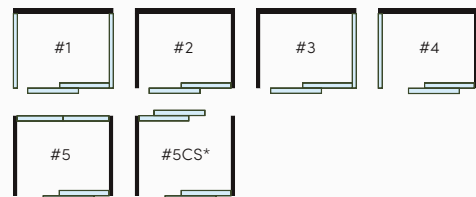
### OPTIONS

- AV kit in technology panel (includes HDMI/USB A DATA/ POWER/VESA BRACKET)
- AV kit in separate AV panel (includes HDMI/USB A DATA/ POWER/VESA BRACKET)
- Air conditioning
- Additional sliding door
- Electromagnetic lock (can be connected to 3rd party systems)
- Door ramp pair (threshold without ramp is only 15mm)
- Additional acoustic panels with velcro fixing
- Sprinkler opening
- Privacy glass (electric dimming with remote controller)

### PACKAGING

Crate 1	249x77x134 cm 500 kg
Crate 2	249x77x124 cm 500 kg
Crate 3	229x77x94 cm 300 kg
Crate 4	229x77x94 cm 300 kg
Crate 5	318x23x23 cm 30 kg

### STRUCTURE OPTIONS



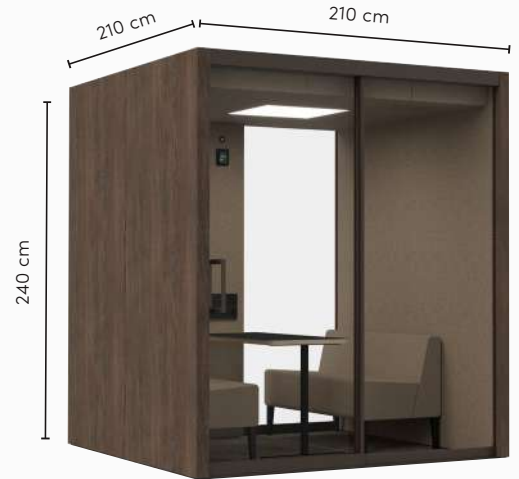
In the standard pod, the door can be placed on any element on the front wall and can be left or right handed. Ask our sales team if you interested in a pod with a door on side wall.

(\*) #5CS is a dual door customer service pod that comes with added cost.

(\* ) May vary a few centimeters, depending on the selected structure and door location. Ask our sales team for customized sizes, heights, and door solutions



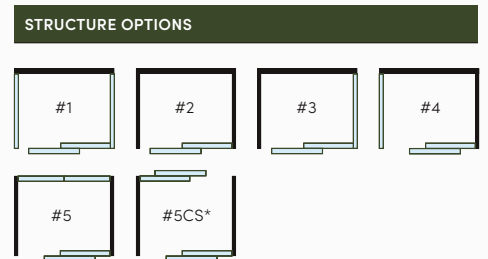
VETROSPACE M+, W210 D210 H240 cm, Capacity 4 persons



TECHNICAL SPECIFICATION		
External dimensions (WxDxH)*	210 x 210 x 240 cm	
Internal dimensions (WxDxH)*	200 x 200 x 220 cm	
Indoor area	4 m <sup>2</sup>	
Weight	1050 kg	
Required free height for installation	250 cm	
Soundproofing	Class A (ISO 23351-1)	41-46dB Rw (ISO 717)
Glass	16mm Sound Control laminated safety glass	
Door	Dual panel sliding door, wheelchair access	
Door handing	Left or right hand	
Ventilation	Automatic +60 l/s	
Ventilation control	Smart CO <sub>2</sub> controller	
Ventilation fan	Radial fan, heavy duty	
Air filtration	<b>AIR SPEC:</b> G4	<b>CLEAN SPEC:</b> G4 + HEPA H 13 (ISO-7 level IAQ)
Lighting	Dimmable LED 4000K, motion detector	Antimicrobial Spectral Blue + Dimmable LED 4000K, motion detector
Usage	Continuous, 24/7	
Connectivity	4 pcs power socket, USB A+C (charging), 2 pcs RJ45	
Power supply	110-240 VAC / 10-16A / 50-60Hz	
Power and network cable	5 meters	
Power	70W (avg) 300W (peak)	
Fire safety	UL 723: Class A-C (surface) ASTM E648: Class 1 (flooring) BfL-S1 (flooring)	
Electrical safety	EN-IEC 60335-1:2024 UL 962 (E514776)	
Seismic safety	Special SEISMIC Certification(2019-0176-COC-01-00) International Building Code (IBC) 2024 California Building Code (CBC) 2025 "	

OPTIONS
AV kit in technology panel (includes HDMI/USB A DATA/ POWER/VESA BRACKET)
AV kit in separate AV panel (includes HDMI/USB A DATA/ POWER/VESA BRACKET)
Air conditioning
Additional sliding door
Electromagnetic lock (can be connected to 3rd party systems)
Door ramp pair (threshold without ramp is only 15mm)
Additional acoustic panels with velcro fixing
Sprinkler opening
Privacy glass (electric dimming with remote controller)

PACKAGING	
Crate 1	249x77x134 cm 850 kg
Crate 2	229x77x114 cm 400 kg



In the standard pod, the door can be placed on any element on the front wall and can be left or right handed. Ask our sales team if you interested in a pod with a door on side wall.

(\*) #5CS is a dual door customer service pod that comes with added cost.

(\* ) May vary a few centimeters, depending on the selected stucture and door location. Ask our sales team for customized sizes, heights, and door solutions



VETROSPACE M, W210 D160 H240 cm, Capacity 3 persons



**TECHNICAL SPECIFICATION**

External dimensions (WxDxH)*	210 x 160 x 240 cm	
Internal dimensions (WxDxH)*	200 x 150 x 220 cm	
Indoor area	3 m <sup>2</sup>	
Weight	900 kg	
Required free height for installation	250 cm	
Soundproofing	Class A (ISO 23351-1)	41-46dB Rw (ISO 717)
Glass	16 mm Sound Control laminated safety glass	
Door	Dual panel sliding door, wheelchair access	
Door handing	Left or right hand	
Ventilation	Automatic +60 l/s	
Ventilation control	Smart CO <sub>2</sub> controller	
Ventilation fan	Radial fan, heavy duty	
Air filtration	<b>AIR SPEC:</b> G4	<b>CLEAN SPEC:</b> G4 + HEPA H 13 (ISO-7 level IAQ)
Lighting	Dimmable LED 4000K, motion detector	Antimicrobial Spectral Blue + Dimmable LED 4000K, motion detector
Usage	Continuous, 24/7	
Connectivity	4 pcs power socket, USB A+C (charging), 2 pcs RJ45	
Power supply	110-240 VAC / 10-16A / 50-60Hz	
Power and network cable	5 meters	
Power	70W (avg) 300W (peak)	
Fire safety	UL 723: Class A-C (surface) ASTM E648: Class 1 (flooring) Bfl-S1 (flooring)	
Electrical safety	EN-IEC 60335-1:2024 UL 962 (E514776)	
Seismic safety	Special SEISMIC Certification(2019-0176-COC-01-00) International Building Code (IBC) 2024 California Building Code (CBC) 2025	

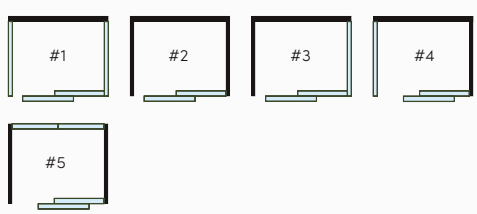
**OPTIONS**

- AV kit in technology panel (includes HDMI/USB A DATA/ POWER/VESA BRACKET)
- AV kit in separate AV panel (includes HDMI/USB A DATA/ POWER/VESA BRACKET)
- Air conditioning
- Additional sliding door
- Electromagnetic lock (can be connected to 3rd party systems)
- Door ramp pair (threshold without ramp is only 15mm)
- Additional acoustic panels with velcro fixing
- Sprinkler opening
- Privacy glass (electric dimming with remote controller)

**PACKAGING**

Crate 1	249x77x134 cm 700 kg
Crate 2	229x77x114 cm 400 kg

**STRUCTURE OPTIONS**

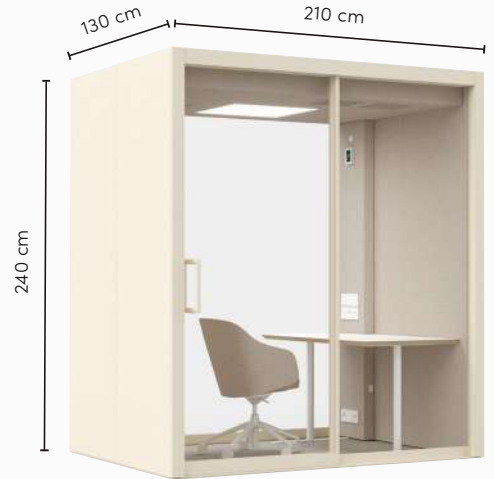


In the standard pod, the door can be placed on any element on the front wall and can be left or right handed. Ask our sales team if you interested in a pod with a door on side wall.

(\* ) May vary a few centimeters, depending on the selected structure and door location. Ask our sales team for customized sizes, heights, and door solutions

# S+

VETROSPACE S+, W210 D130 H240 cm, Capacity 2 persons



TECHNICAL SPECIFICATION		
External dimensions (WxDxH)*	210 x 130 x 240 cm	
Internal dimensions (WxDxH)*	200 x 120 x 220 cm	
Indoor area	2,4 m²	
Weight	820 kg	
Required free height for installation	250 cm	
Soundproofing	Class A (ISO 23351-1)	41-46dB Rw (ISO 717)
Glass	16 mm Sound Control laminated safety glass	
Door	Dual panel sliding door, wheelchair access	
Door handing	Left or right hand	
Ventilation	Automatic +40 l/s	
Ventilation control	Smart CO <sub>2</sub> controller	
Ventilation fan	Radial fan, heavy duty	
Air filtration	<b>AIR SPEC:</b> G4	<b>CLEAN SPEC:</b> G4 + HEPA H 13 (ISO-7 level IAQ)
Lighting	Dimmable LED 4000K, motion detector	Antimicrobial Spectral Blue + Dimmable LED 4000K, motion detector
Usage	Continuous, 24/7	
Connectivity	4 pcs power socket, USB A+C (charging), 2 pcs RJ45	
Power supply	110-240 VAC / 10-16A / 50-60Hz	
Power and network cable	5 meters	
Power	50W (avg) 100W (peak)	
Fire safety	UL 723: Class A-C (surface) ASTM E648: Class 1 (flooring) Bfl-S1 (flooring)	
Electrical safety	EN-IEC 60335-1:2024 UL 962 (E514776)	
Seismic safety	Special SEISMIC Certification(2019-0176-COC-01-00) International Building Code (IBC) 2024 California Building Code (CBC) 2025 "	

OPTIONS	
AV kit in technology panel (includes HDMI/USB A DATA/ POWER/VESA BRACKET)	
AV kit in separate AV panel (includes HDMI/USB A DATA/ POWER/VESA BRACKET)	
Electromagnetic lock (can be connected to 3rd party systems)	
Door ramp pair (threshold without ramp is only 15mm)	
Additional acoustic panels with velcro fixing	
Sprinkler opening	
Privacy glass (electric dimming with remote controller)	

PACKAGING	
Crate 1	249x77x134 cm 650 kg
Crate 2	229x77x94 cm 400 kg



In the standard pod, the door can be placed on any element on the front wall and can be left or right handed. Ask our sales team if you interested in a pod with a door on side wall.

(\* ) May vary a few centimeters, depending on the selected stucture and door location. Ask our sales team for customized sizes, heights, and door solutions

# S

VETROSPACE S, W210 D110 H240 cm, Capacity 2 persons



### TECHNICAL SPECIFICATION

External dimensions (WxDxH)*	210 x 110 x 240 cm	
Internal dimensions (WxDxH)*	200 x 100x 220 cm	
Indoor area	2m <sup>2</sup>	
Weight	750 kg	
Required free height for installation	250 cm	
Soundproofing	Class A (ISO 23351-1)	41-46dB Rw (ISO 717)
Glass	16 mm Sound Control laminated safety glass	
Door	Dual panel sliding door, wheelchair access	
Door handing	Left or right hand	
Ventilation	Automatic +40 l/s	
Ventilation control	Smart CO <sub>2</sub> controller	
Ventilation fan	Radial fan, heavy duty	
Air filtration	<b>AIR SPEC:</b> G4	<b>CLEAN SPEC:</b> G4 + HEPA H 13 (ISO-7 level IAQ)
Lighting	Dimmable LED 4000K, motion detector	Antimicrobial Spectral Blue + Dimmable LED 4000K, motion detector
Usage	Continuous, 24/7	
Connectivity	4 pcs power socket, USB A+C (charging), 2 pcs RJ45	
Power supply	110-240 VAC / 10-16A / 50-60Hz	
Power and network cable	5 meters	
Power	50W (avg) 100W (peak)	
Fire safety	UL 723: Class A-C (surface) ASTM E648: Class 1 (flooring) BfL-S1 (flooring)	
Electrical safety	EN-IEC 60335-1:2024 UL 962 (E514776)	
Seismic safety	Special SEISMIC Certification(2019-0176-COC-01-00) International Building Code (IBC) 2024 California Building Code (CBC) 2025	

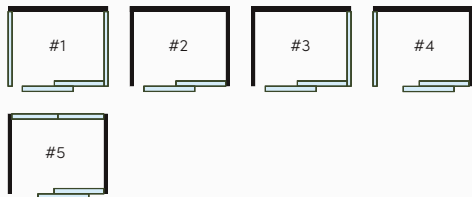
### OPTIONS

- AV kit in technology panel (includes HDMI/USB A DATA/ POWER/VESA BRACKET)
- AV kit in separate AV panel (includes HDMI/USB A DATA/ POWER/VESA BRACKET)
- Electromagnetic lock (can be connected to 3rd party systems)
- Door ramp pair (threshold without ramp is only 15 mm)
- Additional acoustic panels with velcro fixing
- Sprinkler opening
- Privacy glass (electric dimming with remote controller)

### PACKAGING

Crate 1	249x77x134 cm 600 kg
Crate 2	229x77x94 cm 350 kg

### STRUCTURE OPTIONS



In the standard pod, the door can be placed on any element on the front wall and can be left or right handed. Ask our sales team if you interested in a pod with a door on side wall.

(\* ) May vary a few centimeters, depending on the selected stucture and door location. Ask our sales team for customized sizes, heights, and door solutions

# XS+

VETROSPACE XS+, W150 D110 H226 cm, Capacity 1 person

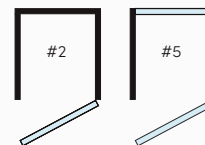


TECHNICAL SPECIFICATION	
External dimensions (WxDxH)	150 x 110 x 226 cm
Internal dimensions (WxDxH)	127 x 98 x 205 cm
Indoor area	1,25 m <sup>2</sup>
Weight	570 kg
Required free height for installation	240 cm
Soundproofing	Class A (ISO 23351-1) 41-43dB Rw (ISO 717)
Glass	10 mm Sound Control laminated safety glass
Door	Hinged door
Door handing	Right hand
Ventilation	Automatic +20 l/s
Ventilation fan	Radial fan, heavy duty
Air filtration	G4
Lighting	Facial light: LED 4000K dimmable
	Ceiling light: LED 4000K dimmable
Maneuverability	Concealed 360 turning wheels
Desk	Fixed table 970x375mm at 73cm height included. Table color matches exterior panel.
Usage	Continuous, 24/7
Connectivity	1 pc power socket, USB A+C (charging)
Power supply	110-240 VAC / 10-16A / 50-60Hz
Power and network cable	5 meters
Power	40W (avg) 100W (peak)
Fire safety	UL 723: Class A-C (surface) ASTM E648: Class 1 (flooring) Bfl-S1 (flooring)
Electrical safety	EN-IEC 60335-1:2024 UL 962 (E514776)

OPTIONS
Dual RJ45 sockets
Electrically adjustable desk
Mechanical lock with key
Additional acoustic panels with velcro fixing
Sprinkler opening

PACKAGING
Crate 1 240 x 77 x 144 cm 750 kg

#### STRUCTURE OPTIONS



# XS

VETROSPACE XS, W115 D110 H226 cm, Capacity 1 person



## TECHNICAL SPECIFICATION

External dimensions (WxDxH)	115 x 110 x 226 cm	
Internal dimensions (WxDxH)	92 x 98 x 205 cm	
Indoor area	0,9 m <sup>2</sup>	
Weight	500 kg	
Required free height for installation	240 cm	
Soundproofing	Class A (ISO 23351-1)	41-43dB Rw (ISO 717)
Glass	10mm Sound Control laminated safety glass	
Door	Hinged door	
Door handing	Right hand	
Ventilation	Automatic +20 l/s	
Ventilation fan	Radial fan, heavy duty	
Air filtration	G4	
Lighting	Facial light: LED 4000K dimmable	
	Ceiling light: LED 4000K dimmable	
Maneuverability	Concealed 360 turning wheels	
Desk	Fixed table 970x375mm at 107cm height included. Table color matches exterior panel.	
Usage	Continuous, 24/7	
Connectivity	1 pc power socket, USB A+C (charging)	
Power supply	110-240 VAC / 10-16A / 50-60Hz	
Power and network cable	5 meters	
Power	40W (avg) 100W (peak)	
Fire safety	UL 723: Class A-C (surface) ASTM E648: Class 1 (flooring) BfL-S1 (flooring)	
Electrical safety	EN-IEC 60335-1:2024 UL 962 (E514776)	

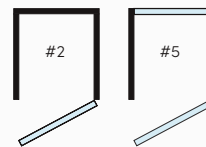
## OPTIONS

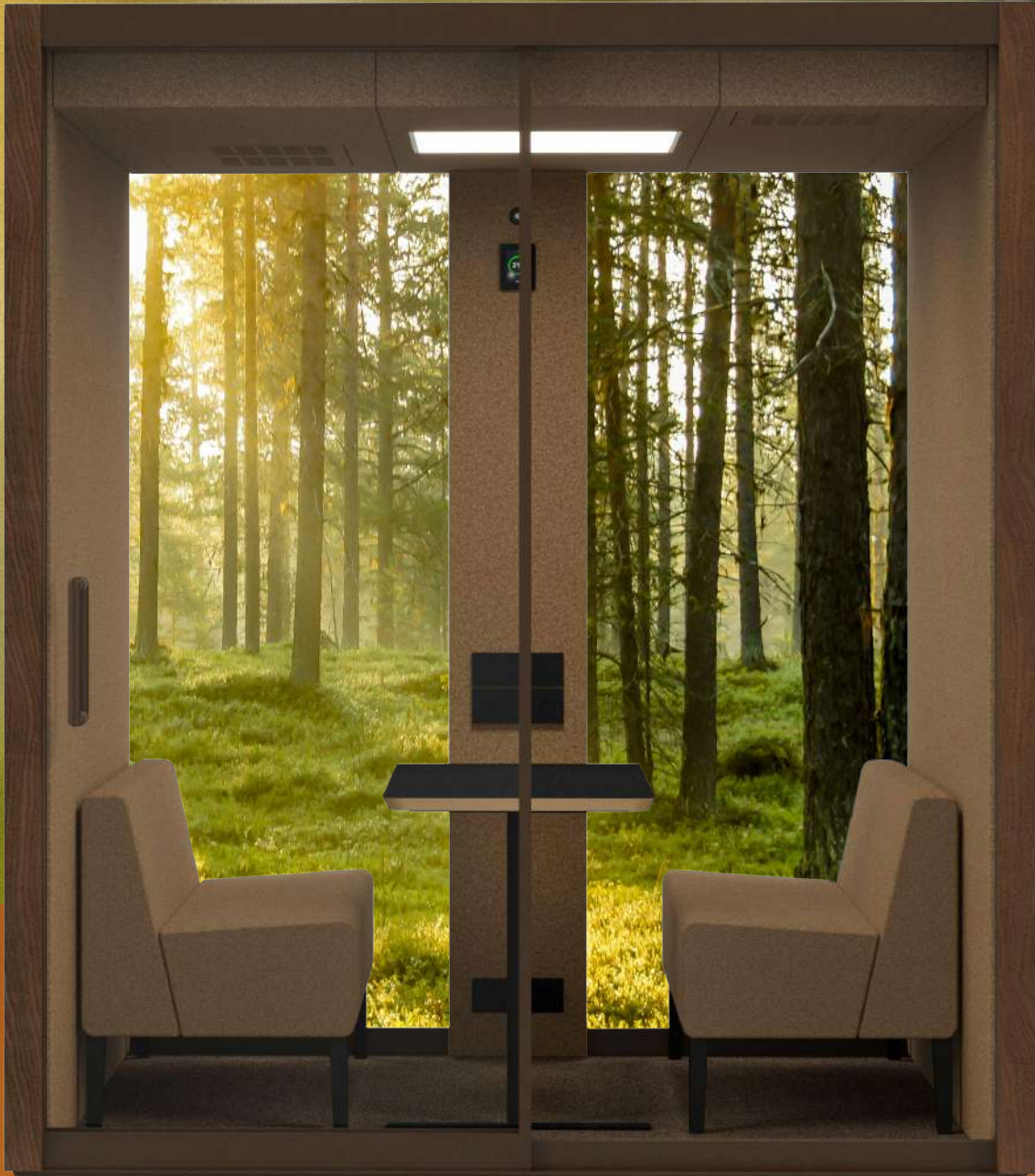
- Dual RJ45 sockets
- Electrically adjustable desk
- Mechanical lock with key
- Additional acoustic panels with velcro fixing
- Sprinkler opening

## PACKAGING

- Crate 1                      240 x 77 x 134 cm 650 kg

## STRUCTURE OPTIONS





# COLORS AND MATERIALS

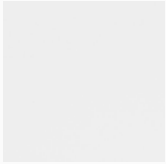
## STANDARD OPTIONS

Lead time is approximately 6 weeks

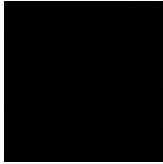
### Exterior | Wall panels

Koskisen MFC  
koskisen.com

EGGER MFC  
egger.com



Basic White



U999 TM9  
Black



U599  
Indigo Blue



H1399 ST10  
Truffle Brown Denver  
Oak



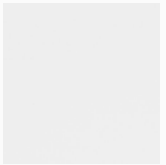
H3157 ST12  
Vicenza Oak



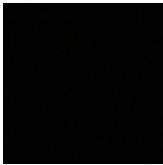
U115 ST9  
Carat Beige

### Exterior & Interior | Profiles

Recycled aluminium  
makelaalu.fi



RAL 9016  
White



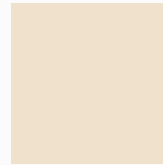
RAL 9004  
Black



RAL 5004  
Black Blue



RAL 7006  
Beige Grey



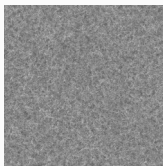
RAL 080 90 10  
Mushroom white

### Interior | Walls and ceiling

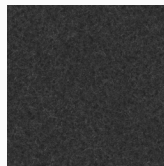
ECOfelt  
90% wool, 10% recycled PET | 100% recycled PET available  
www.slalom-it.com



ECOfelt 955  
Ghost white



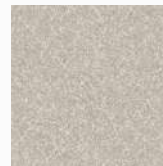
ECOfelt 953  
Grey



ECOfelt 923  
Dark grey



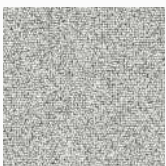
ECOfelt 332E  
Caramel



ECOfelt 952  
Beige

### Interior | Carpet

Tapibel Cobalt SDN  
100% polyamide  
Tapibel.be



64041  
Light Grey



64051  
Dark grey



64010  
Light Beige



64031  
Dark Beige

The rooftop is always white, visible only from an overhead perspective.

## EXTENDED OPTIONS

Lead time is approximately 10 weeks

### Exterior | Wall panels

EGGER MFC  
egger.com



H1227 TM12  
Brown Abano Ash



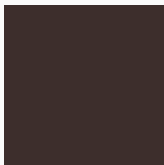
U640 ST9  
Olive Green



U325 ST9  
Antique Rose

### Exterior & Interior | Profiles

Recycled aluminium  
makelaalu.fi



RAL 070 30 10  
Dark Brown



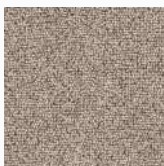
RAL 100 60 20  
Olive Green



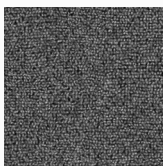
NCS S3010-Y80R  
Rose

### Interior | Carpet

Tapibel Cobalt SDN  
100 % polyamide  
Tapibel.be



64020  
Beige



64044  
Mid Grey



64061  
Grey Blue

## CUSTOMIZED OPTIONS

Ask for lead time and price

MATERIAL	APPLICATION	MORE INFO
Slalom Acoustics ECOfelt	Interior or exterior walls / Ceiling	slalom-it.com
Egger eurodecor MFC or HPL	Exterior walls	egger.com
HVL Real wood veneer	Exterior walls	hvloy.com
RAL Classic / Design	Profiles	ral-farben.de
Tapibel Cobalt SDN	Carpet	tapibel.be
Gerflor GTI Tiles / Mipolam Affinity EL7	Flooring	gerflor.com

# SMART FEATURES AND TECHNICAL DETAILS

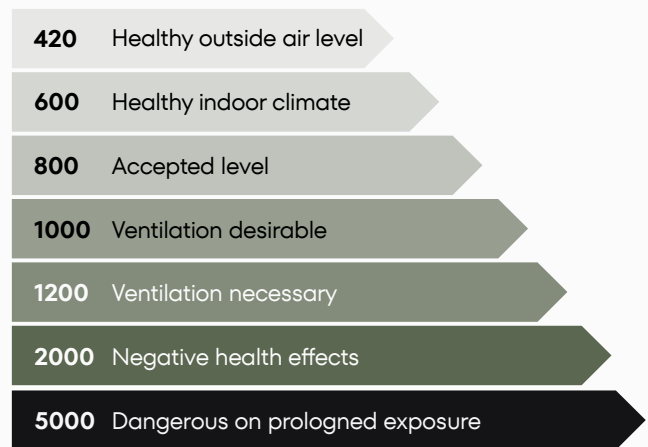
VETROSPACE pods are built for comfort, privacy, and safety, with performance verified by industry-leading standards. From **smart CO<sub>2</sub>-controlled ventilation** that keeps air fresh to **A-Class soundproofing** for confidential conversations, every detail is engineered for a better workspace. The **CLEAN** feature set adds **Spectral Blue MWHI® antimicrobial blue lighting** for continuous hygiene, while optional

**air conditioning** ensures comfort in any environment. For added access control, an **electromagnetic lock** with RFID or code pad is also available. The following pages detail the technology and craftsmanship behind these features.

## Smart CO<sub>2</sub>-controlled ventilation with filtration

In VETROSPACE pods from XXL to S, a built-in CO<sub>2</sub> sensor monitors CO<sub>2</sub> levels in the air in real time and automatically adjusts airflow to maintain fresh, healthy conditions. As CO<sub>2</sub> levels rise, the system increases ventilation, helping to prevent fatigue and loss of focus.

All XXL to S pods feature continuous positive-pressure ventilation that pushes filtered air in and forces stale air out. **AIR** series pods use G4 filtration with a high-performance fan. The **CLEAN** series adds ISO 7 cleanroom-level dual-stage filtration with optional HEPA H13 filters and Spectral Blue MWHI® antimicrobial blue lighting.



Ranges of CO<sub>2</sub> in the air



## Dual-stage filtration in CLEAN model

**Pre-filtration** – Incoming air is drawn in through a G4 pre-filter to capture larger particles.

**Particle filtration** – Pre-filtered air passes through a HEPA H13 filter for 99.9% removal of harmful particles, pollen, and microbes before entering the pod.

G4 filters should be replaced every 6 months in offices (3 months in industrial use). HEPA H13 filters last up to 24 months in offices (12 months in industrial use). Filter changes are quick and simple – the G4 pre-filter can be replaced without tools, and the HEPA H13 filter is designed for easy handling. You must use genuine VETROSPACE parts to ensure optimal performance.

**Please note:** Ventilation does not remove CO<sub>2</sub> from incoming air – the surrounding space must have adequate fresh air supply. Temperature adjustment requires a separate air-conditioning unit.

## Soundproofing for privacy and focus

Measured using the modern ISO 23351-1 standard, which is designed specifically for testing speech level sound reduction in office pods, all VETROSPACE pods achieve Class A (DS, A up to 32 dB), which is among the highest in the industry.

Because decibels are measured on a logarithmic scale, every 3 dB doubles the sound power. In practical terms, 32 dB is 16 times better at reducing sound than 20 dB.

### Beyond numbers – true confidentiality

While dB values indicate how much sound is reduced, they do not reveal whether speech is understandable. This is where the Speech Transmission Index (STI) comes in. Our pods achieve an inverted STI value as low as 0.03, meaning speech is virtually impossible to understand – essential for private conversations and focused work.

### Superior glass, materials and construction

Glass is often the weakest link in pod soundproofing. We use laminated sound control glass, the thickest on the market at 16.7 mm in XXL to S, outperforming hardened and standard laminated glass. Inside, the pod walls are lined with premium acoustic felt to absorb sound and reduce echo. For even greater performance, optional additional acoustic panels are also available. Our patented space-saving double-panel sliding door and self-levelling base further enhance acoustic performance.

### Trusted where privacy matters

Our pods are used by the Finnish Army, ministries, embassies, hospitals, banks, and other institutions worldwide where confidentiality is non-negotiable.



### Spectral Blue MWHI® antimicrobial Blue Light (aBL)

Antimicrobial Blue Light comes included as standard in VETROSPACE pods from XXL to S with the CLEAN feature set, providing safe, continuous disinfection of air and interior surfaces without chemicals. Using aBL technology, it destroys microbes in a way that is non-ionizing, non-UV, and completely safe for people and materials.

The system works automatically. When the pod is unoccupied, the light glows blue to disinfect. When occupied, it switches to bright white 4000K LED lighting, ideal for productive work. This process helps reduce the need for frequent cleaning by neutralizing bacteria, viruses, and other contaminants.



### Air conditioning unit

Available for VETROSPACE pods from XXL to M, the integrated AC unit keeps the temperature comfortable in any season. In office settings, it ensures that air stays cool and fresh during long meetings. In industrial environments, it offers an energy-efficient way to warm only the occupied cubic meters, helping maintain comfort without heating large spaces.



### Electromagnetic lock

Available for VETROSPACE pods from XXL to S and ideal for customer service pods, the electromagnetic lock allows entry via RFID card or a secure code. This means customers can access the pod without staff assistance, improving efficiency and privacy. The system includes a code pad by default but can also be integrated with a custom locking control. The lock can withstand up to 1800N of force and automatically disengages during a power outage for safety. Not burglary-proof and should not be relied upon as the sole security measure.





# *FURNITURE*

## ADJUSTABLE MEETING TABLES

Meeting tables feature a durable double-layer design in two-ply low-pressure laminate (2 × 16 mm), available in VETRO-SPACE MFC stock colors. The layered surface adds workspace and discreet storage beneath. Adjustable lifting frames are offered in black or white, with further customization available on request.



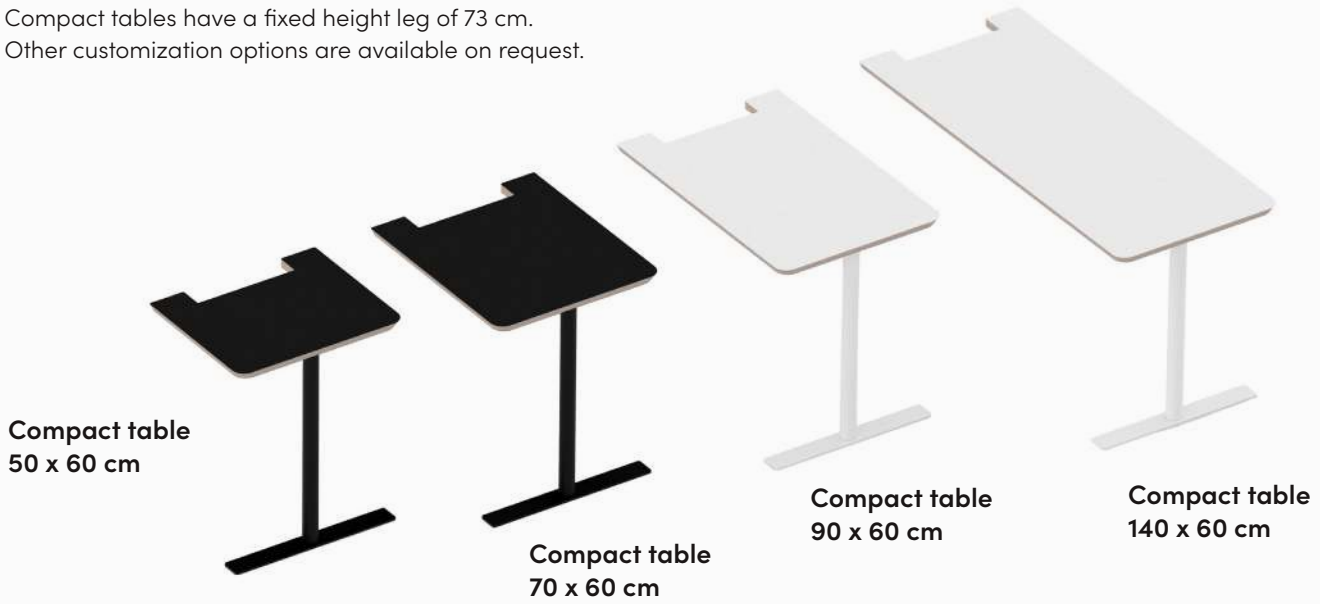
## DESKS

All desks and tables are made of 30 mm plywood and are available in white or black with edges in natural birch plywood. Fixed or adjustable height legs in black or white.



## COMPACT TABLES

Compact tables have a fixed height leg of 73 cm.  
Other customization options are available on request.



## FIND THE PERFECT TABLE FOR YOUR POD.

Here you'll find our recommended table options for both workspace and meeting space setups in each VETROSPACE pod size. These are starting points to help you choose the right fit.

POD MODEL (CAPACITY)	WORKSPACE	MEETING SPACE
XXL (1-10)		Meeting table 275 x 90 cm + 8-10 pcs swivel chairs
XL (1-8)		Meeting table 180 x 80/90 cm + 6 pcs swivel chairs
L+ (1-6)		Option A: Meeting table 180 x 80 cm + 6 pcs swivel chairs Option B: Meeting table 180x80 cm + 4 pcs sofas 90 cmw
L (1-4)		Option A: Meeting table 140 x 80/90 cm + 4 pcs swivel chairs Option B: Customer service pod with two doors. Meeting table 180x80 cm + 3 pcs swivel chairs
M+ (1-4)	Desk 160 x 70 cm Fixed/adjustable height + swivel chair	Option A: Meeting table 140 x 80 cm + 4 pcs swivel chairs Option B: Compact table 140 x 60 cm + 2 pcs 140 cm sofas
M (1-3)	Desk 140 x 70 cm Fixed/adjustable height + swivel chair	Compact table 90 x 60 cm + sofa 140 cm
S+ (1-2)	Desk 110 x 70 cm Fixed/adjustable height + swivel chair	Option A: Compact table 70 x 60 cm + 2 pcs sofas 70 cm Option B: Compact table 70 x 60 cm + sofa 70 cm + sofa 90 cm
S (1-2)	Compact table 50 x 60 cm + swivel chair	Side table 193 x 35 cm + 2 pcs barstool
XS+ (1)	Fixed/adjustable table 97 x 37.5 cm + swivel chair	
XS (1)	Fixed/adjustable table 97 x 37.5 cm + bar stool	

## *SOFAS*

Our sofas have a seating height of 46 cm and are easy to combine. They are upholstered with Gabriel Focus Melange fabric in dark gray (60900) or gray (60310) and have black legs. Other color and fabric customization options are available on request.



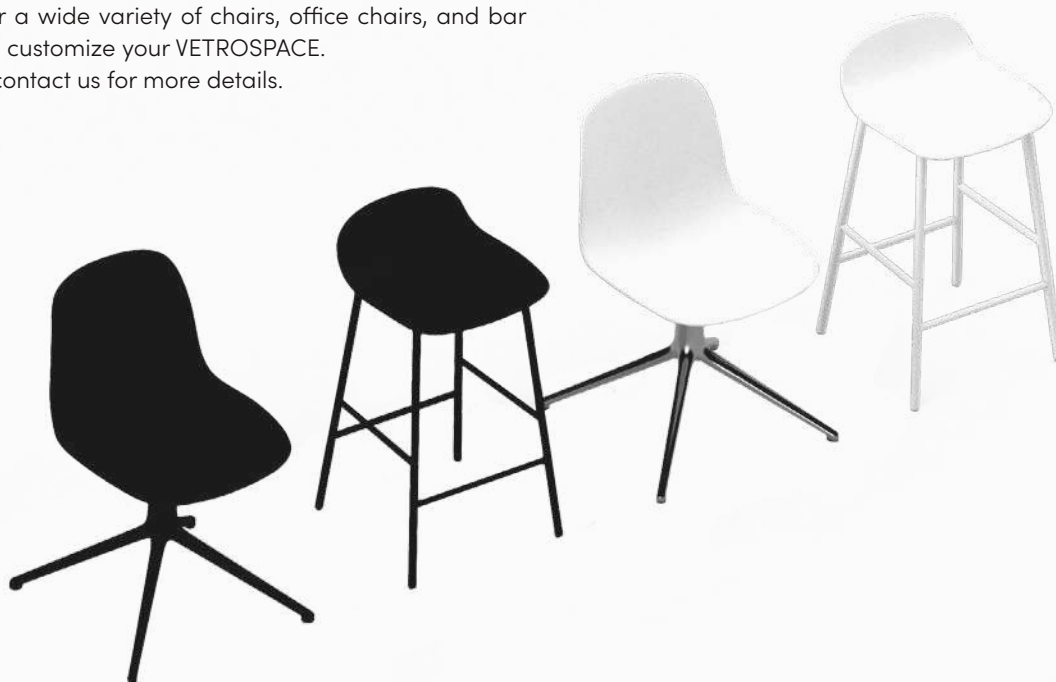
**Sofa 70 x 60 cm**

**Sofa 90 x 60 cm**

**Sofa 140 x 60 cm**

## *CHAIRS*

We offer a wide variety of chairs, office chairs, and bar stools to customize your VETROSPACE. Please contact us for more details.



# *VETROSPACE PRODUCTS HAVE BEEN MANUFACTURED AND TESTED ACCORDING TO MARKET STANDARDS:*

**ELECTRICAL SAFETY:**

IEC 60335-1:2020  
(Safety of electrical appliances)

ISO 14698-1:2003

(Cleanrooms and associated controlled environments – Biocontamination control – Part 1: General principles and methods)

**FIRE SAFETY:**

UL 723; Class A\*  
(E156728; 28.09.2020)  
(Test for Surface Burning Characteristic of Building Materials Flammability / Smoke Index)

**SOUND REDUCTION:**

ISO 23351-1:2020  
(Measurement of speech level reduction of furniture ensembles and enclosures)

ASTM E648 / NFPA101; Class 1  
(TFI Report 20-000644-02; 11.08.2020)  
(Standard Test Method for Critical Radiant Flux of Floor-Covering Systems)

**ENVIRONMENT:**

UL 2821  
(Method for Measuring and Evaluating Chemical Emissions from Building Materials, Finishes and Furnishings)

**HEALTH AND SAFETY:**

VTT-CR-01226-20 (21.10.2020)  
(Microbiological effect of VETROSPACE environment controlled by ventilation, Visible Light Disinfection (VLD) and photocatalytic coating)

**VETROSPACE VLD-LIGHTING:**

aBL (Antimicrobial Blue Light) technology:  
no UV radiation leakage

VTT-CR-01227-20 (21.10.2020)  
(Virucidal efficacy of Visible Light Disinfection (VLD) lighting and photocatalytic coating)

IEC 6241/62778  
(Assessment of blue light hazard to light sources and luminaires)

VTT-CR-01228-20 (21.10.2020)  
(Bactericidal efficacy of Visible Light Disinfection (VLD) lighting and photocatalytic coating)

CCEA Mark – City of Chicago Environmental Air (Luminaire Requirements used in Environmental Air Spaces) \*

**ISO-7 IDOOR AIR QUALITY PERFORMANCE (DNV-GL):**

EN 12599:2012  
(Ventilation for buildings – Test procedures and measurement methods to hand over air conditioning and ventilation systems)

cETLus listed (Intertek 3189676 & 5011214) according to UL 1598\* (Standard for Safety Luminaires)  
NSF Protocol P442-2015\*  
(Controlled Environment Light Fixtures)

**STRUCTURE:**

EN 12600:2002  
(Glass in building. Pendulum test. Impact test method and classification for flat glass.)

ISO 14644-1:2015  
(Cleanrooms and associated controlled environments – Part 1: Classification of air cleanliness by particle concentration)

EN 14449:2005  
(Glass in building. Laminated glass and laminated safety glass. Evaluation of conformity/product standard.)

**SEISMIC \*\*:**

Special SEISMIC Certification (2019-0176-COC-01-00)

International Building Code (IBC) 2018 (23.02.2021)

California Building Code (CBC) 2019 (23.02.2021)\*

**AND THEY HAVE RECEIVED THE FOLLOWING CERTIFICATES:**

**ELECTRICAL AND FIRE SAFETY:**

UL 962 (E514776)\*

(The Standard for Safety for Household and Commercial Furnishings)

**ENVIRONMENT:**

UL 2818 (GREENGUARD)

(The Standard for Chemical Emissions for Building Materials, Finishes and Furnishings)



Vetrospace's management system has been certified according to the ISO 9001 Quality Management System standard and ISO 14001 Environmental Management System standard.

Design, development, production, sales and maintenance of smart-ventilated acoustic pods, related furniture and glass structures for office, industrial, healthcare and customer-service environments.

\* Applies only to products sold on the US market

\*\* Applies only to products with SEISMIC enforced structure (optional feature)



VETROSPACE® is a registered trademark of VETROSPACE Oy in the European Union and the United States. VETROSPACE™ is used in other jurisdictions to indicate our claim of trademark rights.

© VETROSPACE 2026

All rights reserved. Subject to change without notice.



Patent pending.  
[vetrospace.com/legal](https://vetrospace.com/legal)

# VETRO SPACE



Contact sales



Design resources  
for architects

## *SHOWROOM HELSINKI*

Lastenkodinkatu 5  
00180 Helsinki

## *SHOWROOM TURKU*

Otto Korhosen katu 1  
20660 Littoinen

info@vetrospace.com  
www.vetrospace.com